

lullaby

free
project
idea

GO! baa baa BABY QUILT

finished size 38" x 38"

FABRIC REQUIREMENTS

- White Fabric—1 yard (includes binding)
- Light Blue Fabric— $\frac{5}{8}$ yard
- Green Fabric— $\frac{1}{2}$ yard
- Appliqué Fabrics—scraps or fat quarters
- Fusible Web— $\frac{3}{4}$ yard
- Backing— $1\frac{1}{4}$ yards
- Batting—44" x 44"

CUTTING DIRECTIONS

White Fabric:

- Cut 8— $2\frac{1}{2}$ " x 40" strips
- Cut 6— $4\frac{1}{2}$ " squares
- Cut 5— $2\frac{1}{2}$ " squares
- Cut 12—2" half square finished triangles
- Cut 4—sheep bodies for clouds with fusible web backing

Light Blue Fabric:

- Cut 1— $34\frac{1}{2}$ " x $18\frac{1}{2}$ " rectangle

Green Fabric:

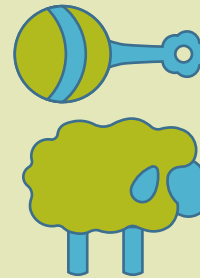
- Cut 1— $34\frac{1}{2}$ " x $10\frac{1}{2}$ " rectangle
- Cut 10— $2\frac{1}{2}$ " squares
- Cut 12—2" half square finished triangles

Appliqué fabrics (all with fusible web backing):

- Cut 2—sheep bodies and 2 sheep bodies in reverse
- Cut 8—sheep legs
- Cut 4—sets of sheep ears and heads
- Cut 1— $2\frac{1}{2}$ " circle for sun
- Cut 6—sheep ears for sun rays

SEWING DIRECTIONS

1. Pin and sew five sets of green, white, green $2\frac{1}{2}$ " squares. Press seams toward green squares.
2. Pin and sew 12 green and white half square triangles. Press seams toward green triangles.
3. Pin and sew green and white half square triangles into pairs for fence tops.
4. Pin and sew pairs to top of white $4\frac{1}{2}$ " squares. Press seams toward squares.



lullaby

55038

Use 6" x 12" mat (55112)

GO! Dies also used:

- Strip Cutter- $2\frac{1}{2}$ " (55017)
- Half Square-2" Finished Triangle (Die packaged with fabric cutter)
- Square- $2\frac{1}{2}$ " (Die packaged with fabric cutter)
- Square- $4\frac{1}{2}$ " (Die packaged with fabric cutter)

5. Layout fence border.
6. Pin and sew units to complete border. Press seams toward $2\frac{1}{2}$ " square sets.
7. Pin and sew light blue rectangle to green rectangle along one long edge. Press seams toward green rectangle.
8. Pin and sew fence border to bottom of green rectangle. Press seams toward green rectangle.
9. Remove paper backings from appliqué shapes.
10. Position sheep, clouds, sun and sun rays. Fuse according to manufacturer's instructions.
Tip: Use the point of a pin to move tiny shapes.
11. Machine appliqué edges of shapes with matching thread and a narrow zigzag or narrow satin stitch.
12. Add $2\frac{1}{2}$ " white border, adding the sides first, then top and bottom. Press seams toward border.

QUILTING & FINISHING

1. Layer batting between quilt top and backing.
2. Pin or baste layers together.
3. Machine quilt with an all-over design.
4. Add binding, mitering corners.

